



## Whitehall Close, Uxbridge, UB8 2DJ

- Part furnished
- Available end of July 2026
- Great location
- Both double bedrooms
- Moments from Uxbridge town
- EPC Rating - D
- Well presented property
- Small family welcome
- Viewing highly recommended
- Close to great local schooling

**£1,550 PCM**

arla | propertymark  
PROTECTED

naea | propertymark  
PROTECTED

Cameron Estate Agents  
195 High Street,  
Middlesex, Uxbridge, UB8 1LB

E: [uxbridge@cameron.co](mailto:uxbridge@cameron.co)  
T: 01895252000

[www.cameron.co](http://www.cameron.co)

Whilst every care has been taken to ensure the accuracy of these particulars, none of the statements contained herein are to be relied upon as representations of fact. These particulars do not constitute an offer or contract.

**Description**

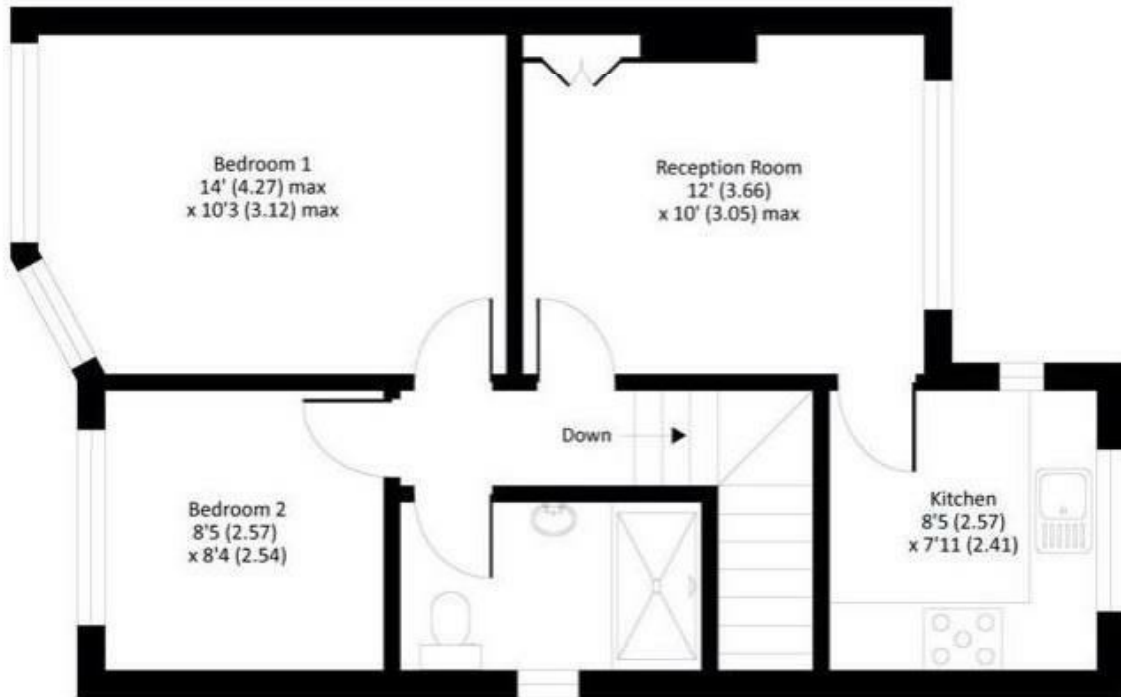
A well presented, first floor maisonette located within a few moments walk of the town centre. The property offers kitchen with white goods, cosy living space, two double bedrooms and a modern, fully tiled shower-room. Further benefits include a double glazing, gas central heating and a private garden. Presented to the market part furnished and available end of July 2026.

**IMPORTANT NOTICE**

These particulars have been prepared upon information supplied by the Vendor and should be verified by your surveyors and solicitors. In accordance with the Property Misdescriptions Act 1991 we have prepared these sales particulars as a general guide to give a broad description of the property. They are not intended to constitute part of an offer or contract. We have not carried out a structural survey and the services, appliances and specific fittings have not been tested. All photographs, measurements, floor plans and distances referred to are given as a guide only and should not be relied upon for the purchase of carpets or any other fixtures or fittings. Lease details service charge and ground rent (where applicable) are given as a guide only and should be checked and confirmed by your solicitor prior to exchange of contract

## First Floor

Approx 48.8 sq. meters (525 sq. feet)



Approx 48.8 sq. meters (525 sq. feet)

# Cameron



Whilst every care has been taken to ensure the accuracy of these particulars, none of the statements contained herein are to be relied upon as representations of fact. These particulars do not constitute an offer or contract.